

## KILT

FICHA TÉCNICA . TECHNICAL DATA SHEET . INFORMACIÓN TÉCNICA

As carpetes em lã Kilt exibem o marcante padrão *tartan* escocês em duas versões inspiradas na robustez e identidade dos clãs das Terras Altas.

The wool Kilt carpets exhibit the striking Scottish *tartan* patterns in two versions inspired by the strength and identity of the Highland clans.

Las alfombras de lana Kilt presentan el llamativo diseño *tartán* escocés en dos versiones inspiradas en la robustez y la identidad de los clanes de las Highlands.

**CONSTRUÇÃO . CONSTRUCTION . FABRICACIÓN . TECIDO À MÃO . HAND WOVEN . TEJIDO A MANO**

**COMPOSIÇÃO . COMPOSITION . COMPOSICIÓN . 100% LÃ . 100% WOOL . 100% LANA**

**BASE . BACKING . BASE . ALGODÃO . COTTON . ALGODÓN**

**LARGURA . WIDTH . ANCHO . 2.00-4.00M**

**CORTE POR MEDIDA . BESPOKE CUT . CORTE A MEDIDA**

**PESO DO PÊLO . PILE WEIGHT . PESO DE LA FELPA . CA. 2.200G/ M<sup>2</sup>**

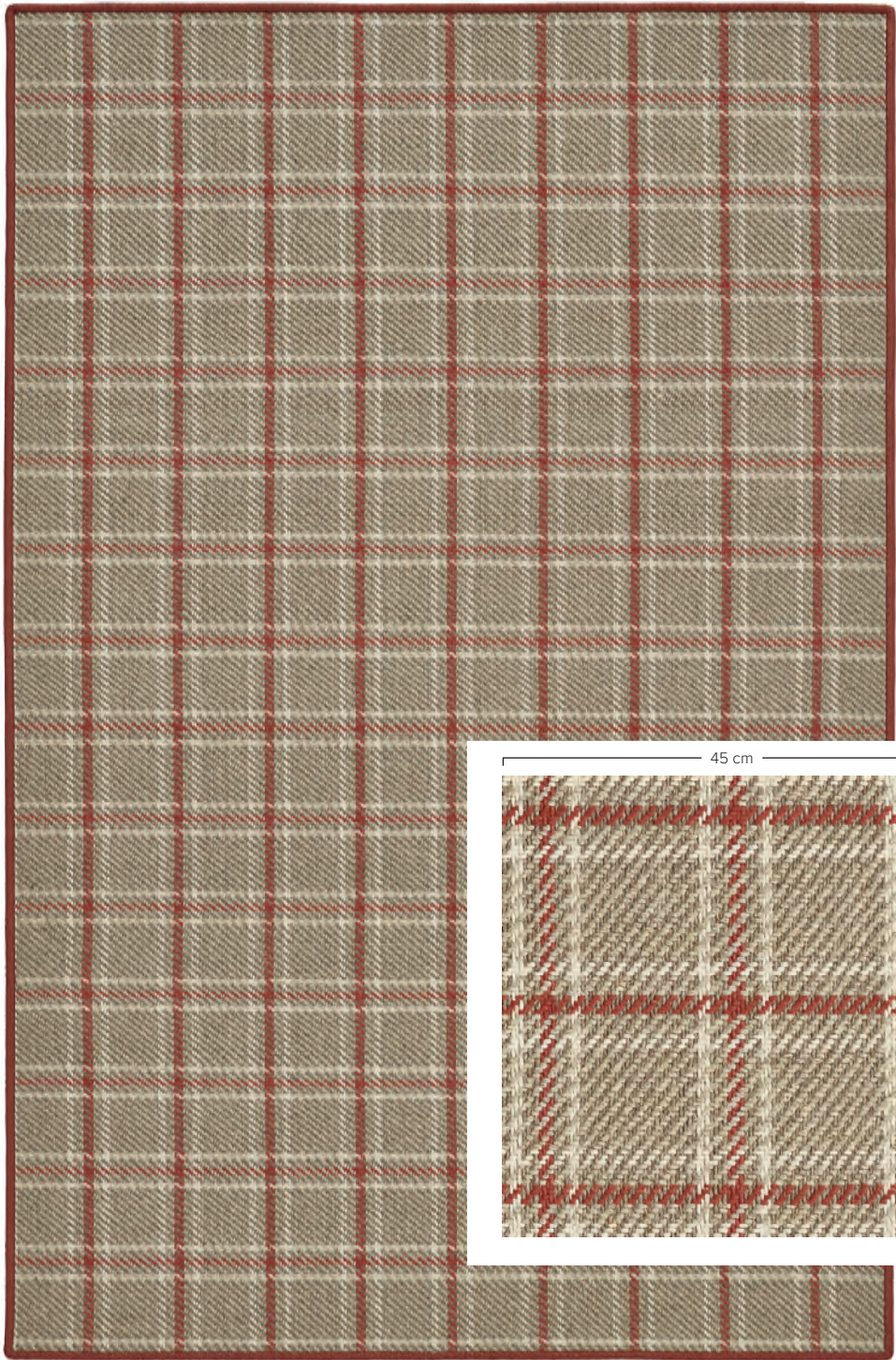
**PESO TOTAL . TOTAL WEIGHT . PESO TOTAL . CA. 3.500GR/M<sup>2</sup>**

**ALTURA DO PÊLO . PILE HEIGHT . ALTURA DE LA FELPA . CA. 12MM**

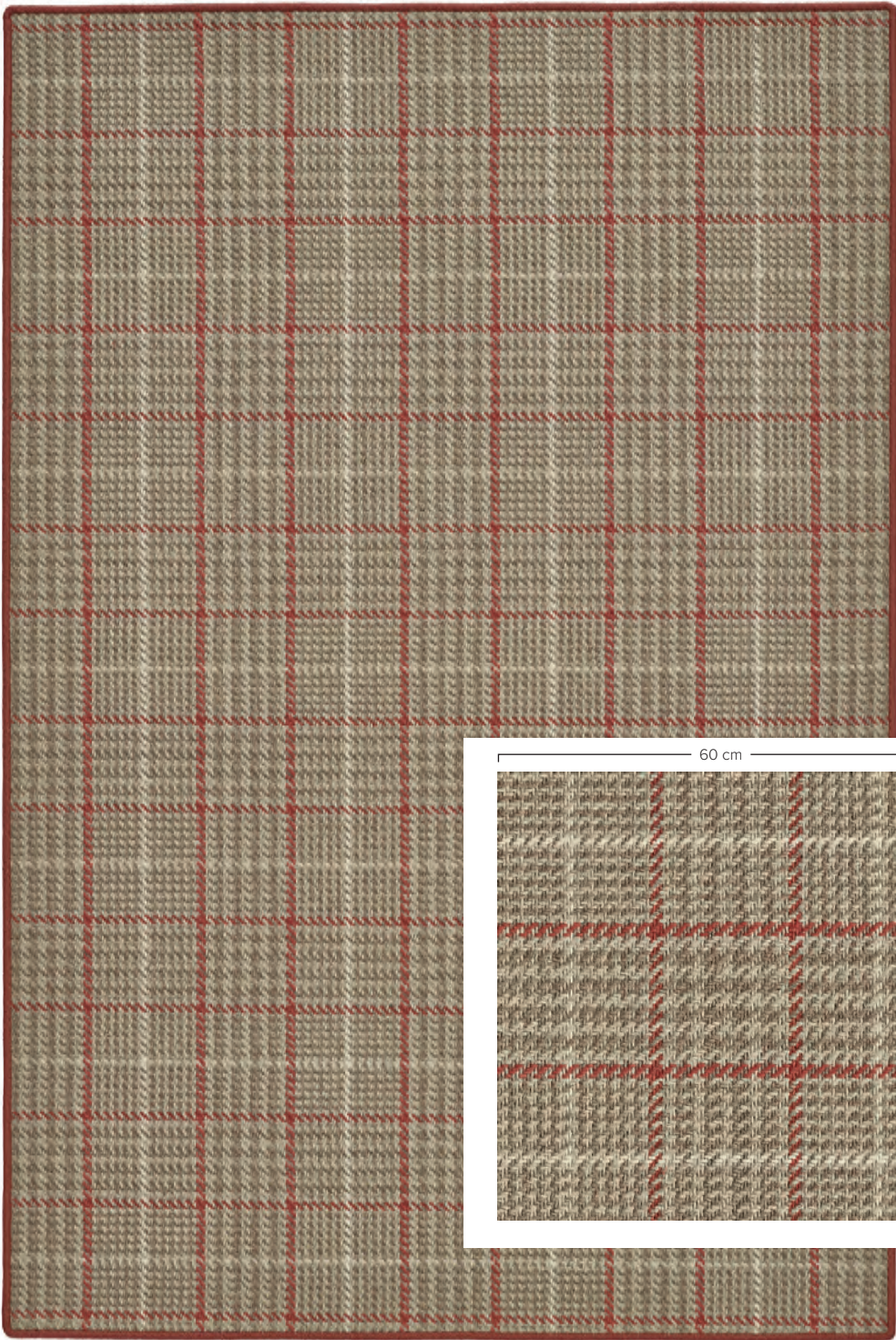
**ALTURA TOTAL . TOTAL HEIGHT . ALTURA TOTAL . CA. 14MM**

**ACABAMENTOS RECOMENDADOS . RECOMMENDED FINISHINGS . ACABADOS RECOMENDADOS**

**LUX . BUREL . FRANJA / FLECOS . TECIDOS / TEJIDOS**



**KILT 500 | Lux 10 . 2.00x3.00M  
( RAPPORT . 45x45CM )**



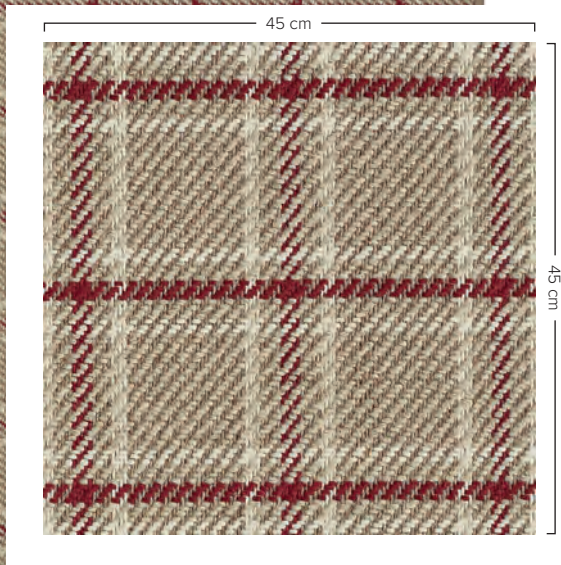
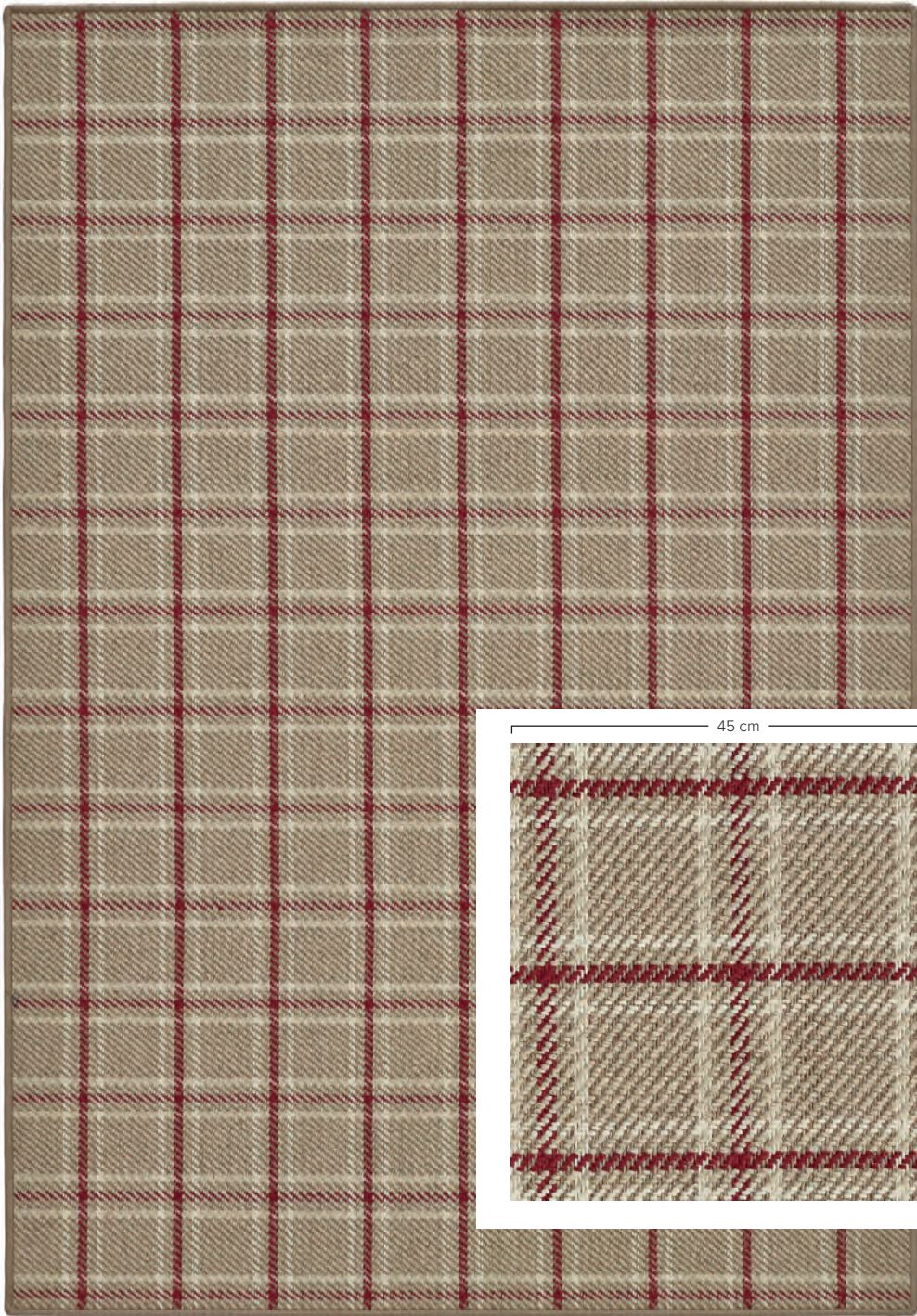
**KILT 510 | LUX 10 . 2.00x3.00M**  
**( RAPPORT . 60x60CM )**



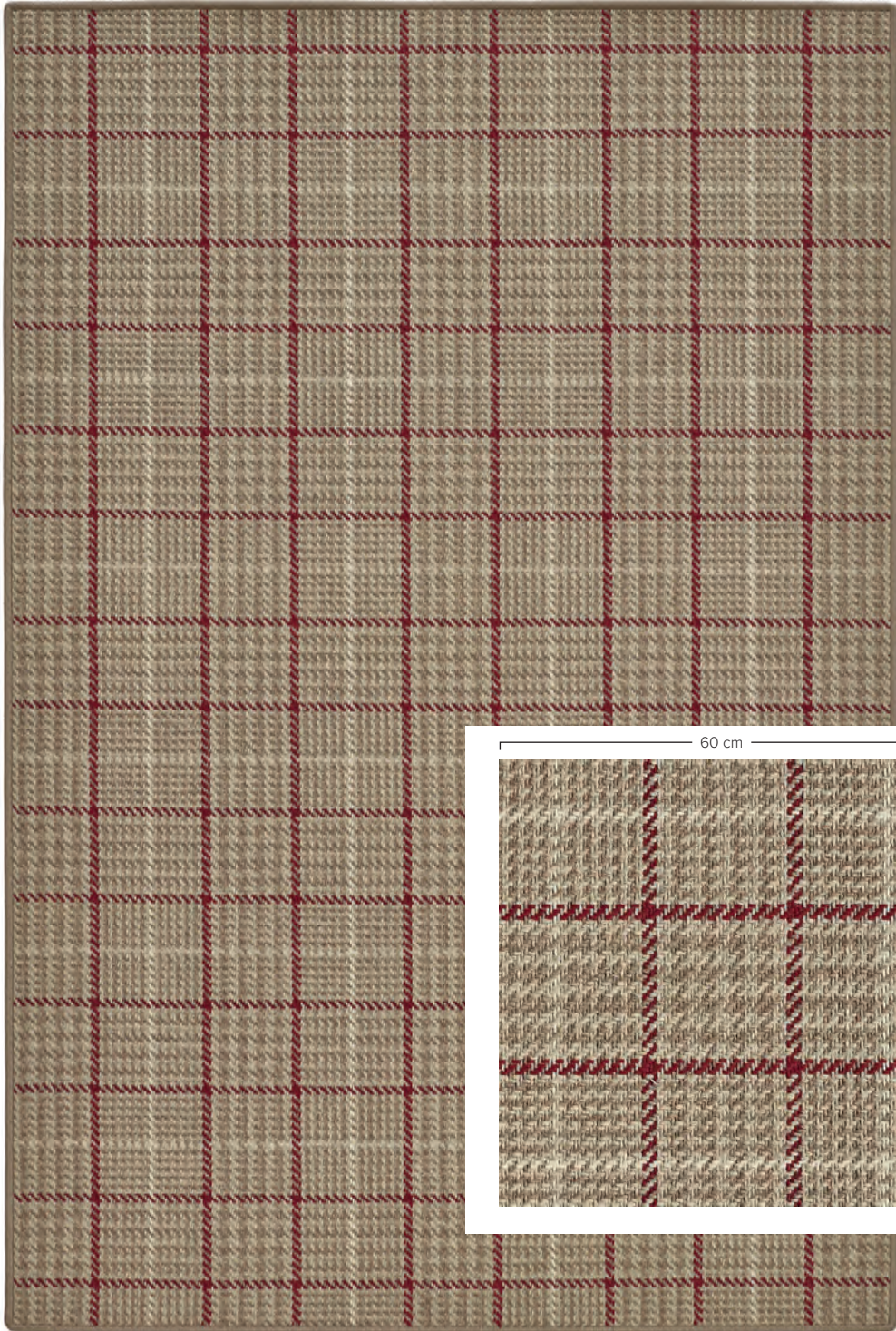
KILT 501 | LUX 47 . 2.00x3.00M  
( RAPPORT . 45x45CM )



**KILT 511 | LUX 47 . 2.00x3.00M**  
**( RAPPORT . 60x60CM )**



**KILT 502 | LUX 46 . 2.00x3.00M**  
**( RAPPORT . 45x45CM )**

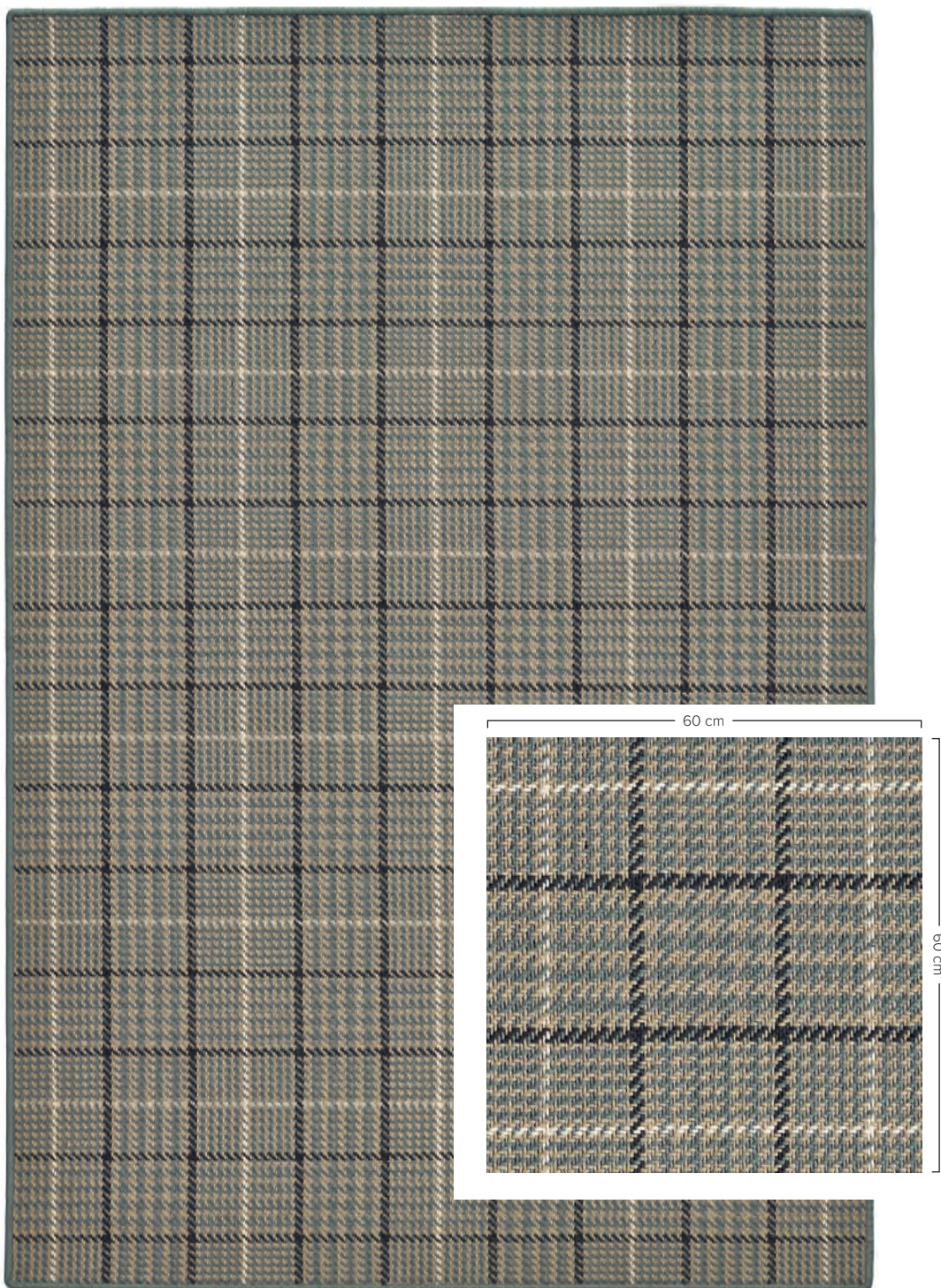


KILT 512 | Lux 46  . 2.00x3.00M  
( RAPPORT . 60x60CM )



**KILT 503 | LUX 49 . 2.00x3.00M**  
**( RAPPORT . 45x45CM )**





**KILT 513 | LUX 49 . 2.00x3.00M**  
**( RAPPORT . 60x60CM )**